



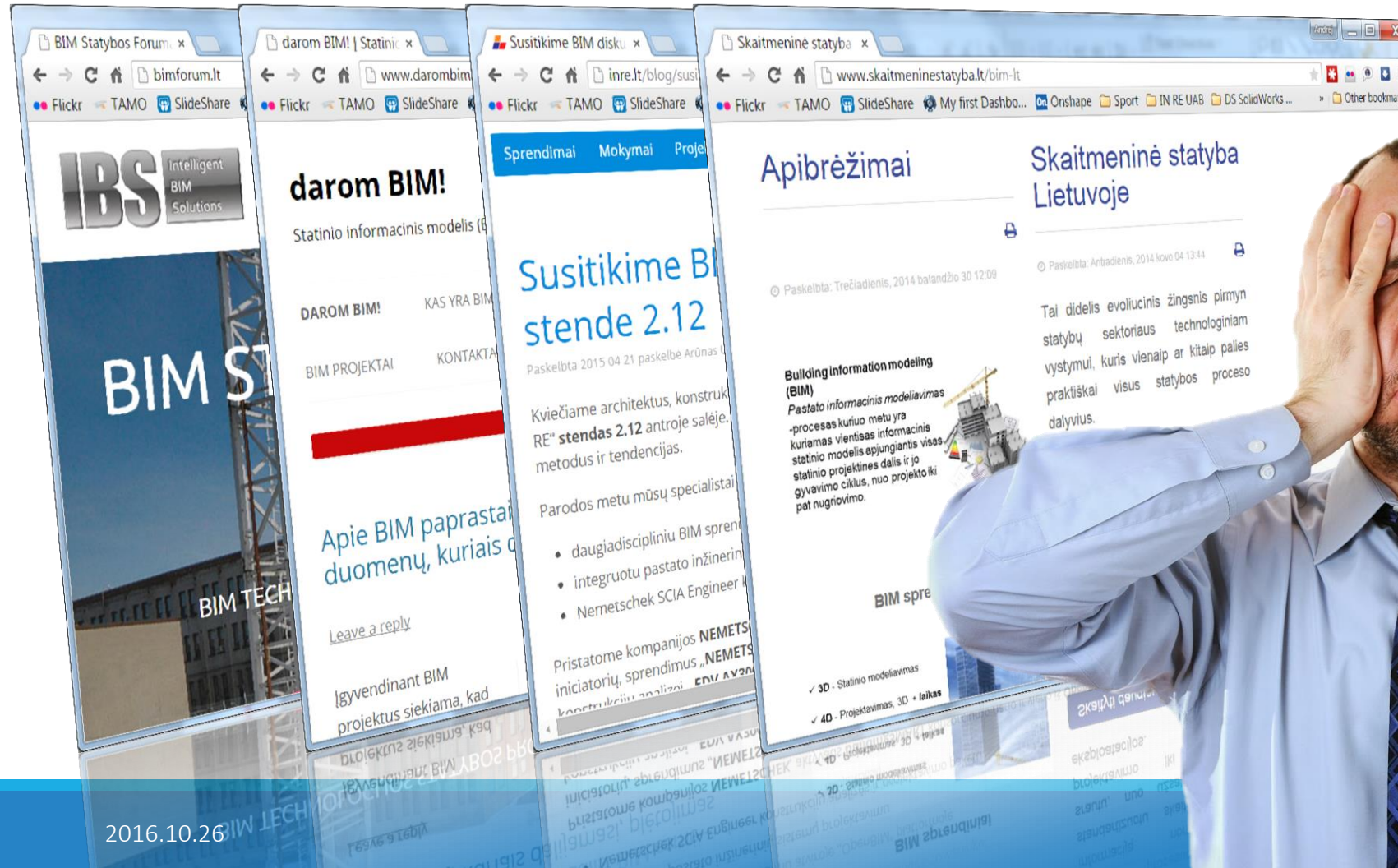
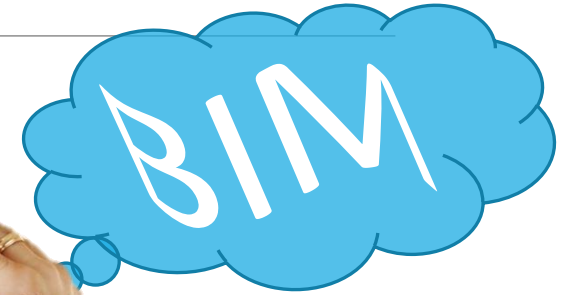
Common Data Environment for BIM Process Management

Vilnius, 2016-10-18
Riga, 2016-10-19
Tallinn, 2016-10-20

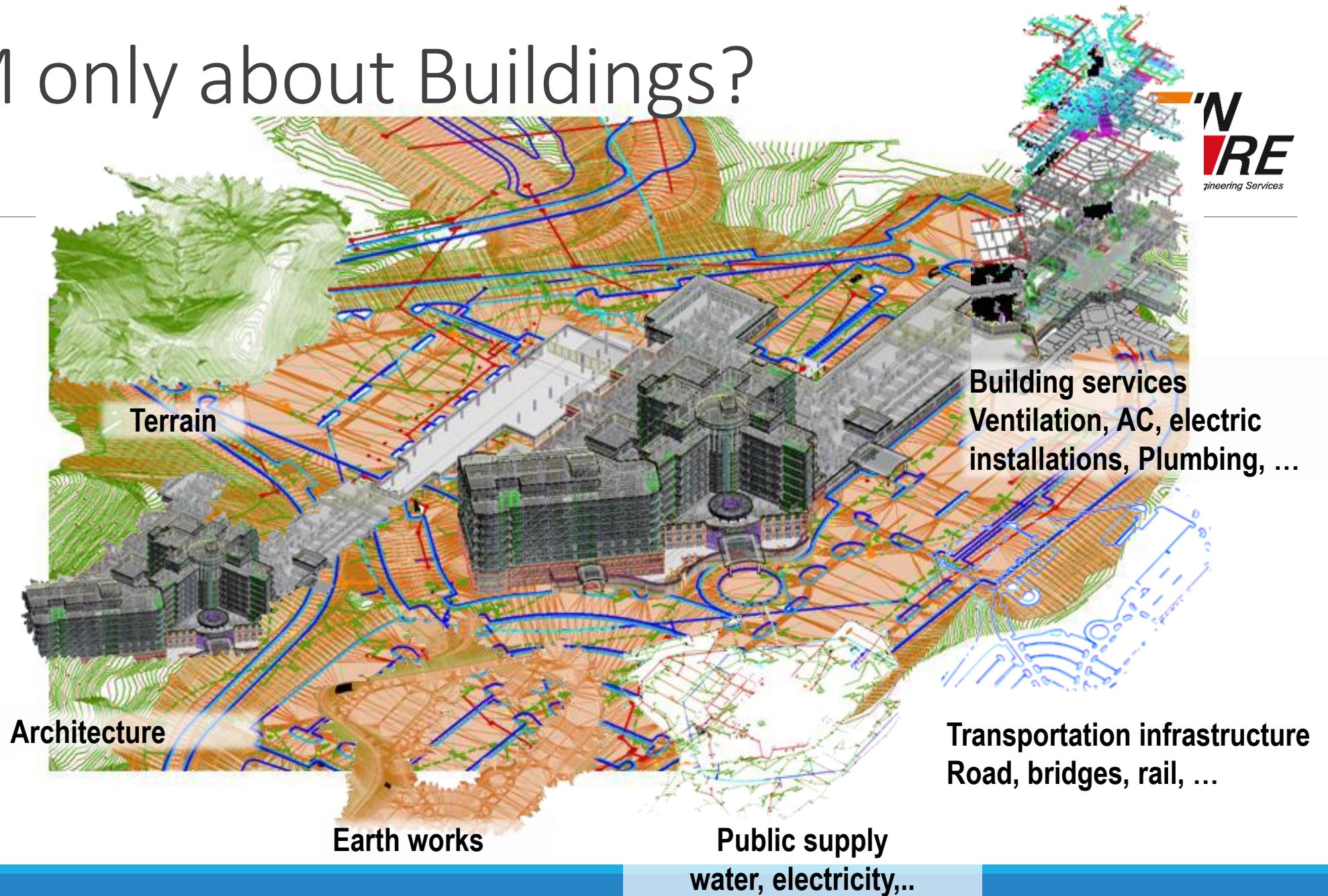
Dr. Arūnas Urbšys
Projects Development Director, UAB „IN RE”



What is BIM?



Is BIM only about Buildings?



Is BIM only about Modelling?



Modelling

Management

Mobility



BIM “is the **process** of
generating and managing building data
during its entire life cycle”
(Automation in Construction 2006)



Why BIM is required?

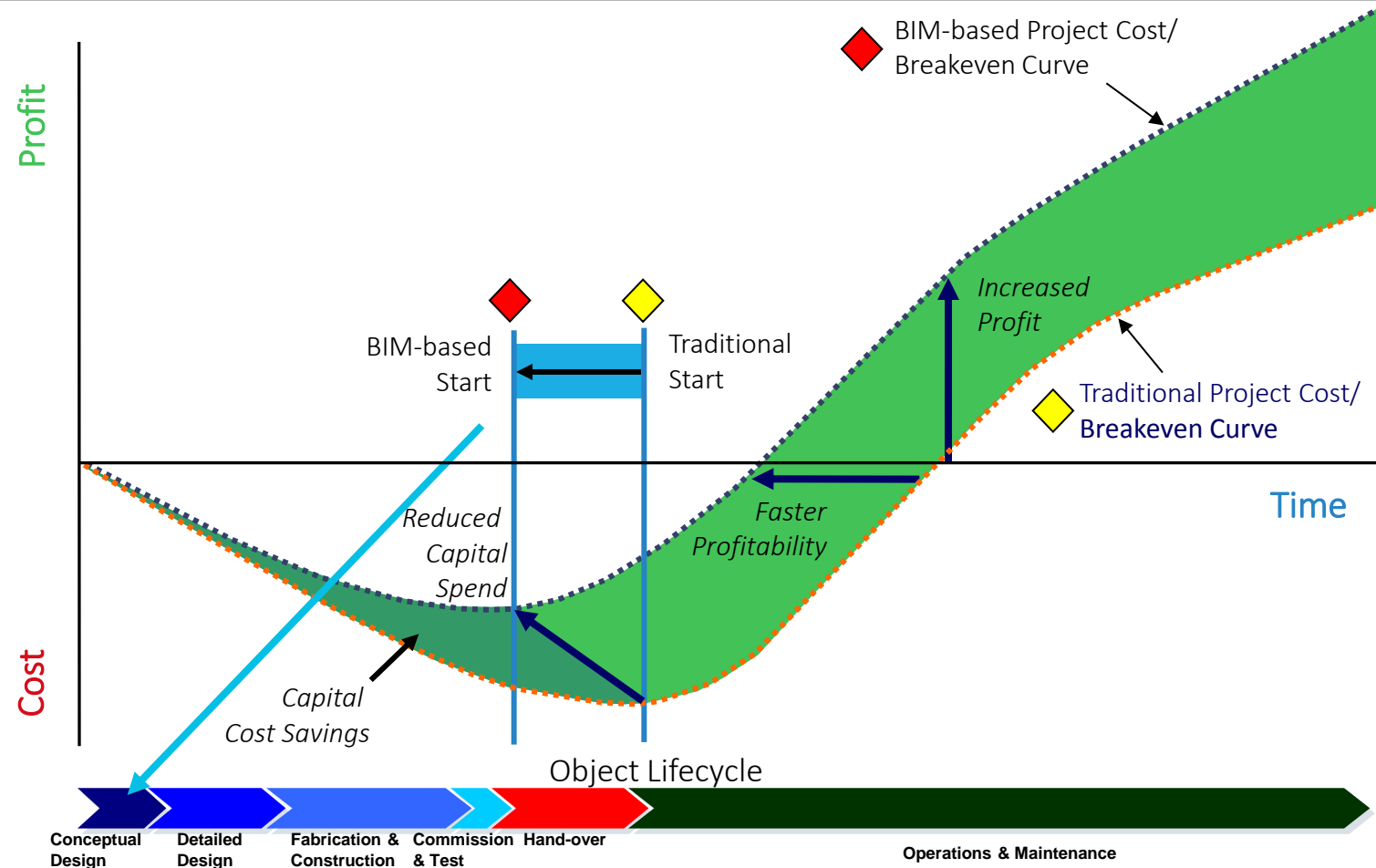
Initiative of Europos parlamento iniciatyva skatinanti BIM diegimą

- [DIRECTIVE 2014/24/EU](#) of the European Parliament and of the Council on **public procurement** and repealing Directive 2004/18/EC suggests, that Member States shall ensure that all communication and information exchange under this Directive are performed using electronic means of communication.
- building information electronic modelling tools are considered as one of such electronic means (Article 22, Paragraph 4) for public works contracts and design contests.
- Member States may encourage, specify or mandate the use of BIM for publicly funded construction and building projects in the European Union by 2016.

The UK, Netherlands, Denmark, Finland and Norway already require the use of BIM for publicly funded building projects. Benefits are reported:

- The British government estimates that the **savings** from large public construction projects **since 2012** is around £1.7 billion (**€2 billion**) and that **66% of** Britain's Major Project Authority **portfolio** is now delivered **on time and within budget**, a significant improvement compared to 33% in 2010. (Source: Construction News)
- According to a report by the European Commission in 2012, public agencies that have already implemented solutions for e-procurement have reported **savings of 5%-20%** of their cost of procurement. The overall size of the EU's public procurement market is estimated to be more than €2,000 billion, which means that a **5% saving translates to around €100 billion in savings per year**. This is equal to the cost of building **more than 150 large hospitals!**

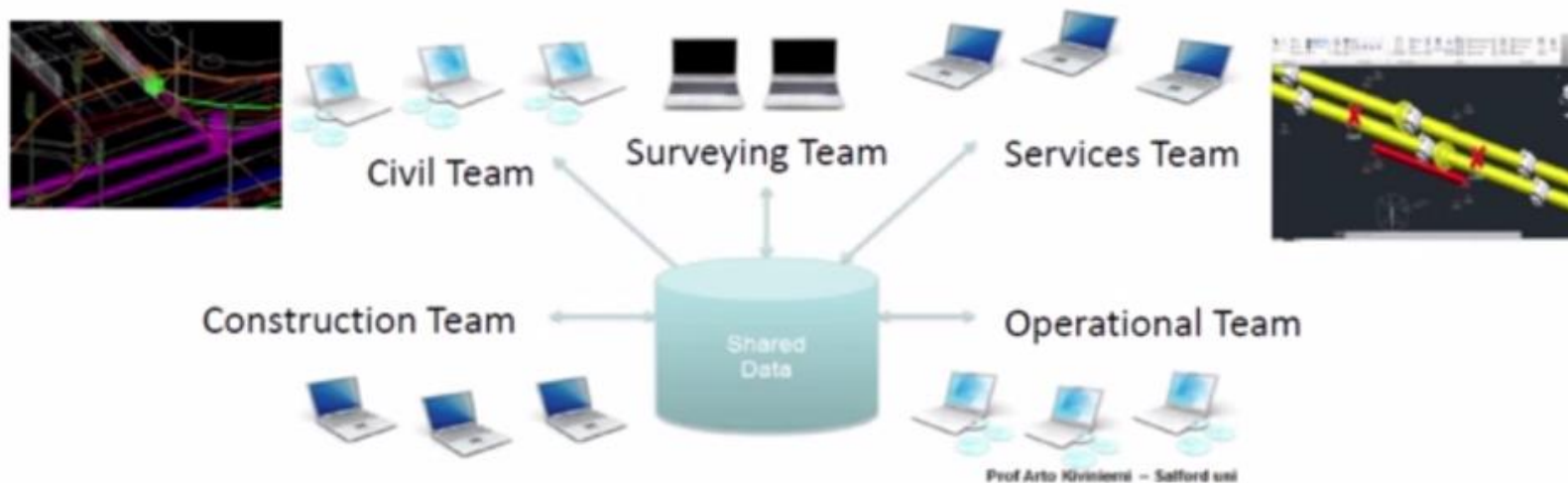
Accumulated benefits through lifecycle



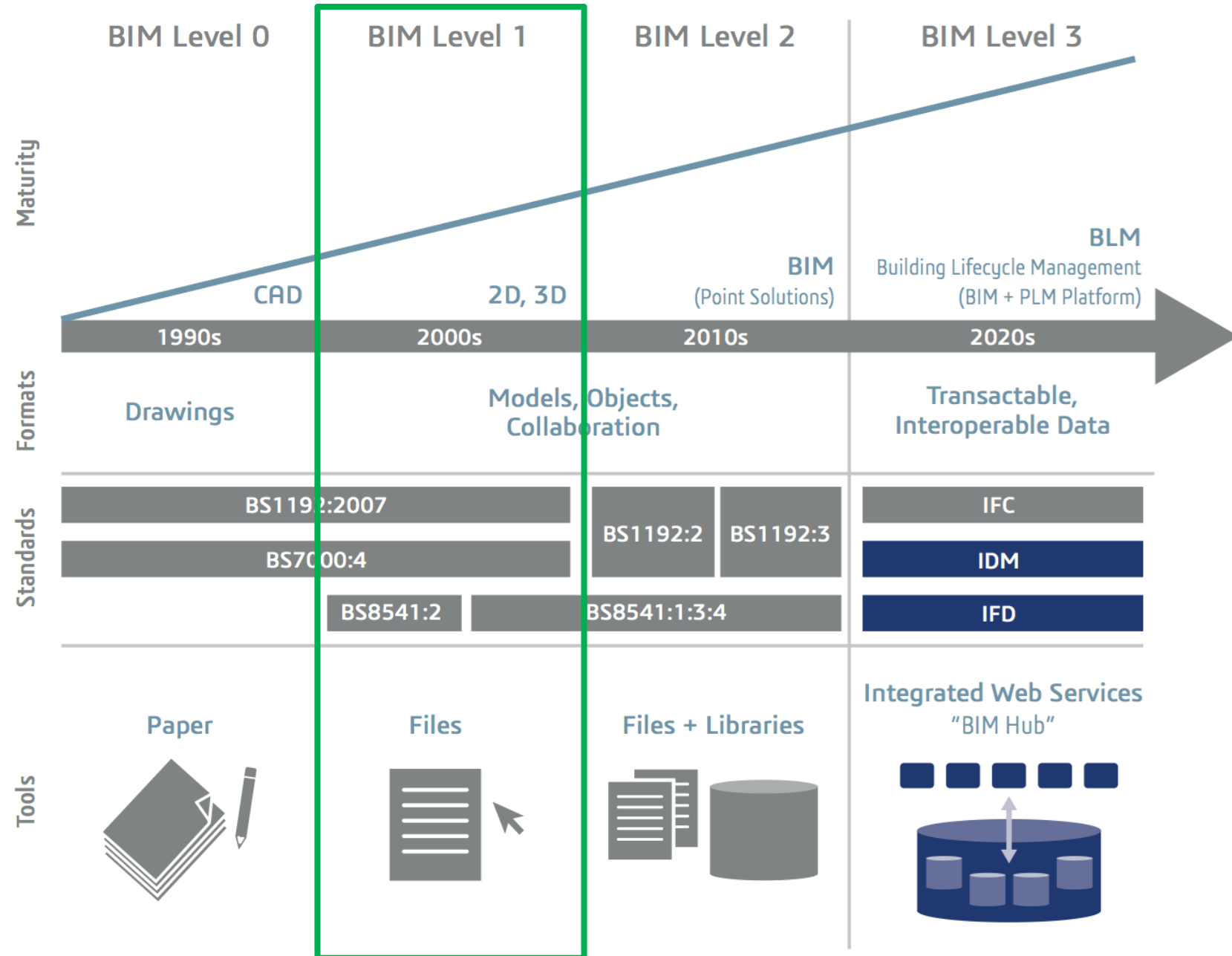
“... over 80% of a project’s total cost are committed within the first 20% of the total project’s design time ...”

Level 2 BIM: a minimum standard

"Level 2 BIM maturity is a series of domain and collaborative federated models, consisting of both 3D geometrical and non-graphical data, prepared by different parties during the project life-cycle within the context of a common data environment. The project participants provide defined, validated outputs via digital data transactions using proprietary information exchanges between various systems in a structured and reusable form."



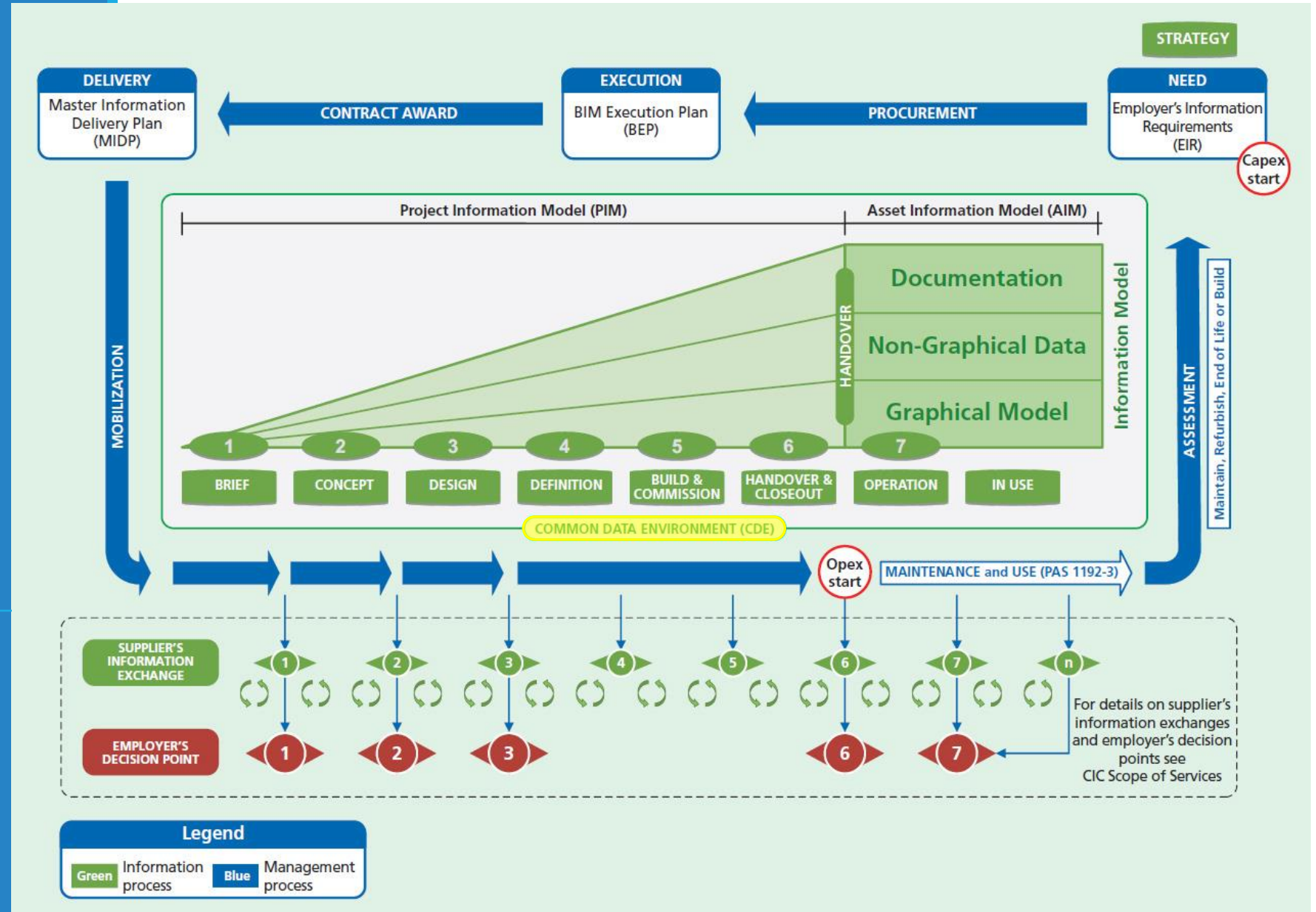
Moving towards BIM Level 2



The BIM Maturity Model by Mark Bew and Mervyn Richards adapted to reflect BLM's relationship to Level 3.

Management of Project Information Model – PIM

BS/PAS1192



Project Delivery plan PAS/BS 1192 (UK)

Project Information Delivery Plan

Plan Status: (c) Graeme Taggards 2014 Beta Proof of Concept Not Commercial

Design Team BEP Preparation

Project: 1400023: Area 56 Bund Upgrade

New Project

COBieIR

ProjXML

Show Mask: Hide Empty Rows:

Stage: EA0 Identification

Role: All Roles

LOD: All LOD

Ref: 1400023

Project: Area 56 Bund Upgrades

Template: EA13

Facility: Thames Flood Defence

Stage 0 Strategy

Stage 1 Brief

Stage 2 Concept

Stage 3 Definition

Stage 4 Design

Stage 5 Build & Commission

Stage 6 Handover & Closeout

Stage 7 Operation & End of Life

Plan of Work: Environment Agency Plan of Work 2013

EA0: Identification

EA1: Prioritising

EA2: Project Start-up

EA3: Business Case Development

EA4: Detail Design

EA5: Contract Award and Construction

EA6: Contract Complete (Defects)

EA7: Operation and End of Life

Programme Stage Close

Information Manager

Stage Status:

01/01/2014

31/12/2014

31/01/2015

31/04/2015

31/08/2015

31/12/2015

CONT

CONT

EA

EA

CONS

CONS

CONS

CONS

CONS

CONS

CONS

CONS

CONS

CONS

CONS

CONS

CONS

CONS

CONS

CONS

CONS

CONS

CONS

CONS

CONS

CONS

CONS

CONS

CONS

CONS

CONS

CONS

CONS

CONS

CONS

CONS

CONS

CONS

CONS

CONS

CONS

CONS

CONS

CONS

CONS

CONS

CONS

CONS

CONS

CONS

CONS

CONS

CONS

CONS

CONS

CONS

CONS

CONS

CONS

CONS

CONS

CONS

CONS

CONS

CONS

CONS

CONS

CONS

CONS

CONS

CONS

CONS

CONS

CONS

CONS

CONS

CONS

CONS

CONS

CONS

CONS

CONS

CONS

CONS

CONS

CONS

CONS

CONS

CONS

CONS

CONS

CONS

CONS

CONS

CONS

CONS

CONS

CONS

CONS

CONS

CONS

CONS

CONS

CONS

CONS

CONS

CONS

CONS

CONS

CONS

CONS

CONS

CONS

CONS

CONS

CONS

CONS

CONS

CONS

CONS

CONS

CONS

CONS

CONS

CONS

CONS

CONS

CONS

CONS

CONS

CONS

CONS

CONS

CONS

CONS

CONS

CONS

CONS

CONS

CONS

CONS

CONS

CONS

CONS

CONS

CONS

CONS

CONS

CONS

CONS

CONS

CONS

CONS

CONS

CONS

CONS

CONS

CONS

CONS

CONS

CONS

CONS

CONS

CONS

CONS

CONS

CONS

CONS

CONS

CONS

CONS

CONS

CONS

CONS

CONS

CONS

CONS

CONS

CONS

CONS

CONS

CONS

CONS

CONS

CONS

CONS

CONS

CONS

CONS

CONS

CONS

CONS

CONS

CONS

CONS

CONS

CONS

CONS

CONS

CONS

CONS

CONS

CONS

CONS

CONS

CONS

CONS

CONS

CONS

CONS

CONS

CONS

CONS

CONS

CONS

CONS

CONS

CONS

CONS

CONS

CONS

CONS

CONS

CONS

CONS

CONS

CONS

CONS

CONS

CONS

CONS

CONS

CONS

CONS

CONS

CONS

CONS

CONS

CONS

CONS

CONS

CONS

CONS

CONS

CONS

CONS

CONS

CONS

CONS

CONS

CONS

CONS

CONS

CONS

CONS

CONS

CONS

CONS

CONS

CONS

CONS

CONS

CONS

CONS

CONS

CONS

CONS

CONS

CONS

CONS

CONS

CONS

CONS

CONS

CONS

CONS

CONS

CONS

CONS

CONS

CONS

CONS

CONS

CONS

CONS

CONS

CONS

CONS

CONS

CONS

CONS

CONS

CONS

CONS

CONS

CONS

CONS

CONS

CONS

CONS

CONS

CONS

CONS

CONS

CONS

CONS

CONS

CONS

CONS

CONS

CONS

CONS

CONS

CONS

CONS

CONS

CONS

CONS

CONS

CONS

CONS

CONS

CONS

CONS

CONS

CONS

CONS

CONS

CONS

CONS

CONS

CONS

CONS

CONS

CONS

CONS

CONS

CONS

CONS

CONS

CONS

CONS

CONS

CONS

CONS

CONS

CONS

CONS

CONS

CONS

CONS

CONS

CONS

CONS

CONS

CONS

CONS

CONS

CONS

CONS

CONS

CONS

CONS

CONS

CONS

CONS

CONS

CONS

CONS

CONS

CONS

CONS

CONS

CONS

CONS

CONS

CONS

CONS

CONS

CONS

CONS

CONS

CONS

CONS

CONS

CONS

CONS

CONS

CONS

CONS

CONS

CONS

CONS

CONS

CONS

CONS

CONS

CONS

CONS

CONS

CONS

CONS

CONS

CONS

CONS

CONS

CONS

CONS

CONS

CONS

CONS

CONS

CONS

CONS

CONS

CONS

CONS

CONS

CONS

CONS

CONS

CONS

CONS

CONS

CONS

CONS

CONS

CONS

CONS

CONS

CONS

CONS

CONS

CONS

CONS

CONS

CONS

CONS

CONS

CONS

CONS

CONS

CONS

CONS

CONS

CONS

CONS

CONS

CONS

CONS

CONS

CONS

CONS

CONS

CONS

CONS

CONS

CONS

CONS

CONS

CONS

CONS

CONS

CONS

CONS

CONS

CONS

CONS

CONS

CONS

CONS

CONS

CONS

CONS

CONS

CONS

CONS

CONS

CONS

CONS

CONS

CONS

CONS

CONS

CONS

CONS

CONS

CONS

CONS

CONS

CONS

CONS

CONS

CONS

CONS

CONS

CONS

CONS

CONS

CONS

CONS

CONS

CONS

CONS

CONS

CONS

CONS

CONS

CONS

CONS

CONS

CONS

CONS

CONS

CONS

CONS

CONS

CONS

CONS

CONS

CONS

CONS

CONS

CONS

CONS

CONS

CONS

CONS

CONS

CONS

CONS

CONS

CONS

CONS

CONS

CONS

CONS

CONS

CONS

CONS

CONS

CONS

CONS

CONS

CONS

CONS

CONS

CONS

CONS

CONS

CONS

CONS

CONS

CONS

CONS

CONS

CONS

CONS

CONS

CONS

CONS

CONS

CONS

CONS

CONS

CONS

CONS

CONS

CONS

CONS

CONS

CONS

CONS

CONS

CONS

CONS

CONS

CONS

CONS

CONS

CONS

CONS

CONS

CONS

CONS

CONS

CONS

CONS

CONS

CONS

CONS

CONS

CONS

CONS

CONS

CONS

CONS

CONS

CONS

CONS

CONS

CONS

CONS

CONS

CONS

CONS

CONS

CONS

CONS

CONS

CONS

CONS

CONS

CONS

CONS

CONS

CONS

CONS

CONS

CONS

CONS

CONS

CONS

CONS

CONS

CONS

CONS

CONS

CONS

CONS

CONS

CONS

CONS

CONS

CONS

CONS

CONS

CONS

CONS

CONS

CONS

CONS

CONS

CONS

CONS

CONS

CONS

CONS

CONS

CONS

CONS

CONS

CONS

CONS

CONS

CONS

CONS

CONS

CONS

CONS

CONS

CONS

CONS

CONS

CONS

CONS

CONS

CONS

CONS

CONS

CONS

CONS

CONS

CONS

CONS

CONS

CONS

CONS

CONS

CONS

CONS

CONS

CONS

CONS

CONS

CONS

CONS

CONS

CONS

CONS

CONS

CONS

CONS

CONS

CONS

CONS

CONS

CONS

CONS

CONS

CONS

CONS

CONS

CONS

CONS

CONS

CONS

CONS

CONS

CONS

CONS

CONS

CONS

CONS

CONS

CONS

CONS

CONS

CONS

CONS

CONS

CONS

CONS

CONS

CONS

CONS

CONS

CONS

CONS

CONS

CONS

CONS

CONS

CONS

CONS

CONS

CONS

CONS

CONS

CONS

CONS

CONS

CONS

CONS

CONS

CONS

CONS

CONS

CONS

CONS

CONS

CONS

CONS

CONS

CONS

CONS

CONS

CONS

CONS

CONS

CONS

CONS

CONS

CONS

CONS

CONS

CONS

CONS

CONS

CONS

CONS

CONS

CONS

CONS

CONS

CONS

CONS

CONS

CONS

CONS

CONS

CONS

CONS

CONS

CONS

CONS

CONS

CONS

CONS

CONS

CONS

CONS

CONS

CONS

CONS

CONS

CONS

CONS

CONS

CONS

CONS

CONS

CONS

CONS

CONS

CONS

CONS

CONS

CONS

CONS

CONS

CONS

CONS

CONS

CONS

CONS

CONS

CONS

CONS

CONS

CONS

CONS

CONS

CONS

CONS

CONS

CONS

CONS

CONS

CONS

CONS

CONS

CONS

CONS

CONS

CONS

CONS

CONS

CONS

CONS

CONS

CONS

CONS

CONS

CONS

CONS

CONS

CONS

CONS

CONS

CONS

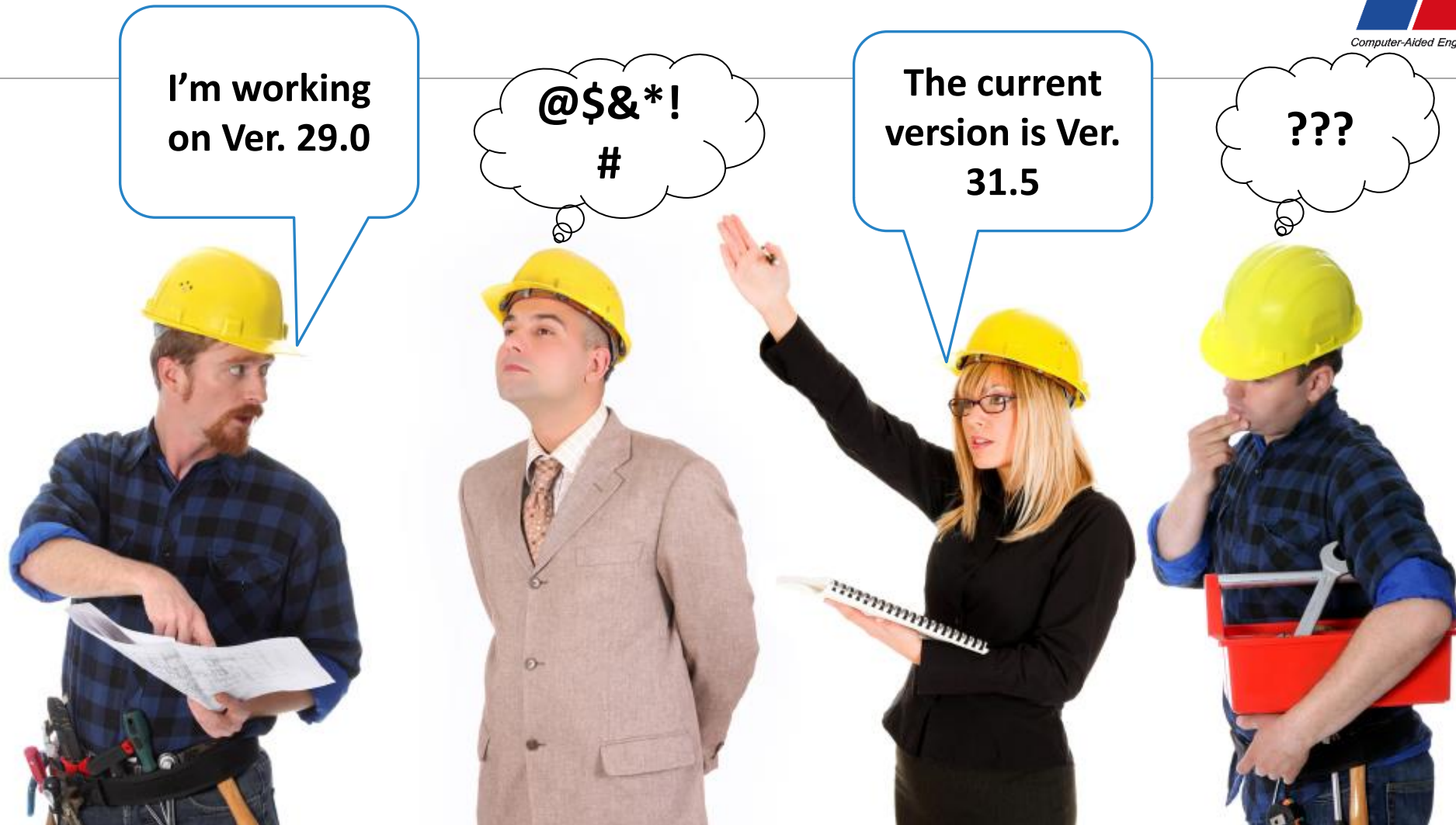
CONS

CONS

CONS

CONS

The reality



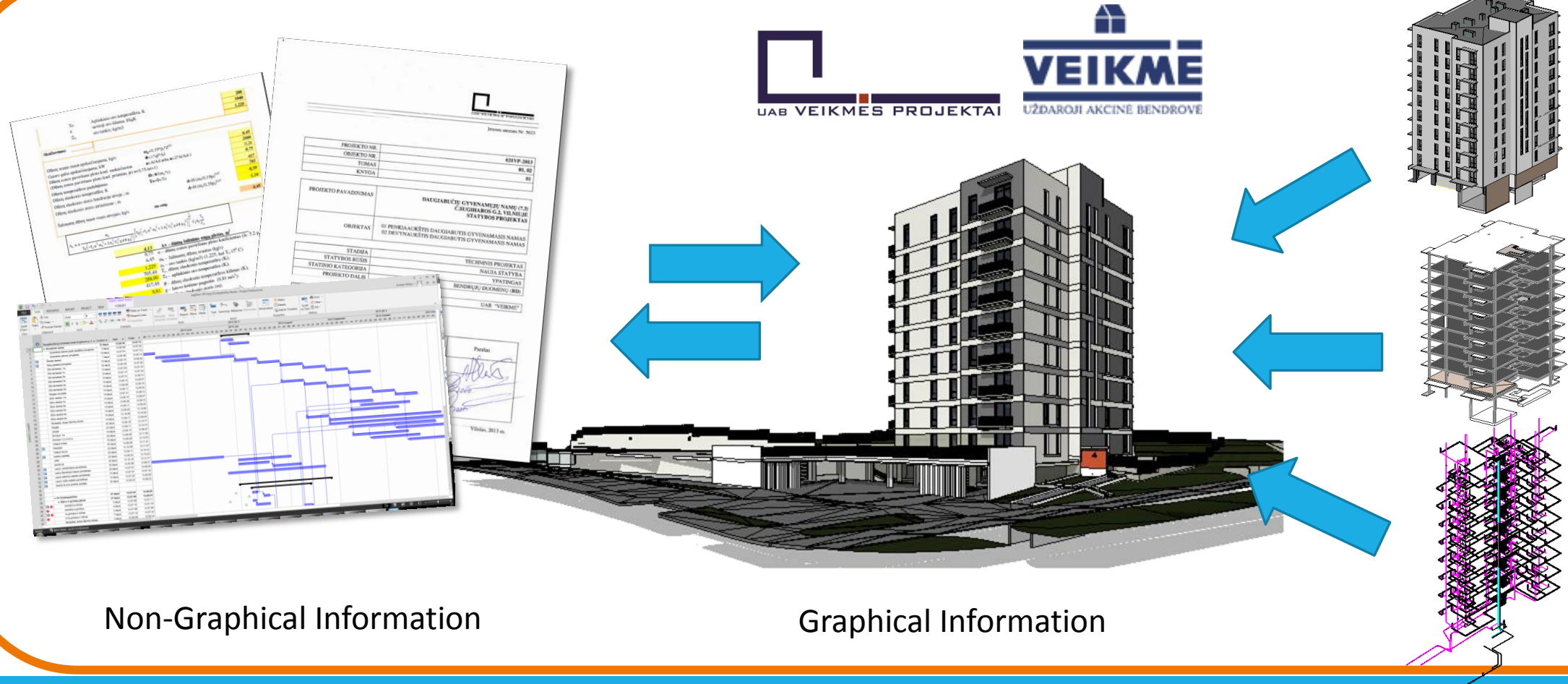
What is required for successful BIM?



- ▣ Access anywhere, anytime:
 - ▣ Internet (Web browser)
 - ▣ Desktop (software integration)
 - ▣ Mobile (touch tablets)
- ▣ Security, Rights, Control:
 - ▣ Projects Teams access only assigned Projects, Folders
 - ▣ Work in Progress (Teams edit only assigned documents, shared data is Read Only)
 - ▣ Quality Ceck – only Authorized Persons
 - ▣ Control of works, Audit Trail
- ▣ Ensuring Processes:
 - ▣ Automated Coddling
 - ▣ Managed Stages of the Process
 - ▣ Automatic Versioning
- ▣ Easy of Use:
 - ▣ Managed Cloud Service (IT costs)
 - ▣ Convenient Windows-like interface
 - ▣ Ready Templates (structures of Folders, Rights)
 - ▣ Easy and fast confirmation process
 - ▣ Easy search and ensured actuality

The *Common Data Environment* is required

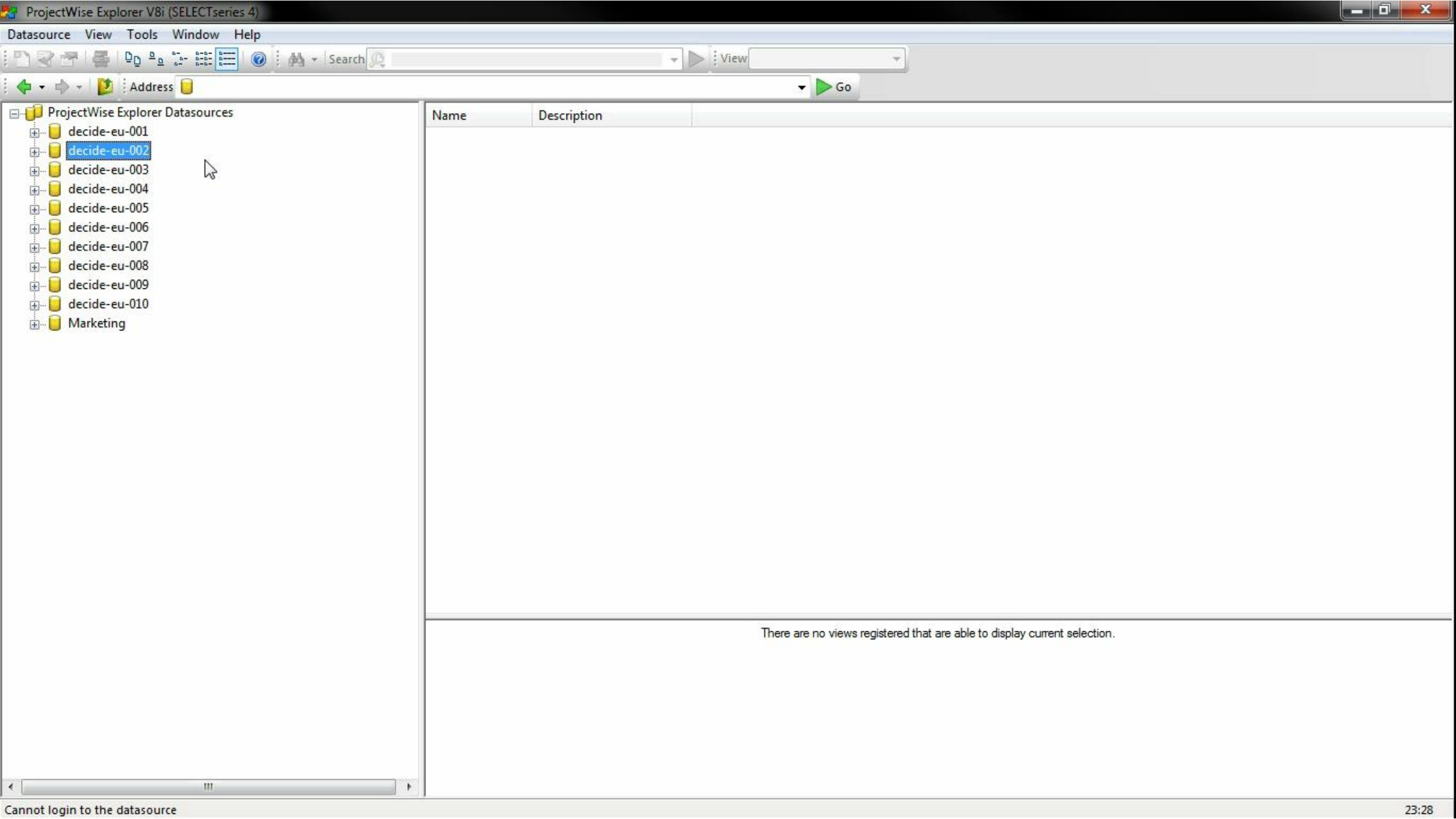
Common Data Environment



Project Initiation

This presentation uses the data of 9 stores multi-flat house in Sugiharos str. 2, Vilnius, Lithuania by of Company „Veikmė“





Uploading or Creating Documents

This presentation uses the data of 9 stores multi-flat house in Sugiharos str. 2, Vilnius, Lithuania by of Company „Veikmė“



ProjectWise Explorer Datasources

- decide-eu-001 (Arunas.Urbsys)
 - Documents
 - Partners
 - Lietuva
 - 031VP-2013 Daugiabučiai Sugiharos g, 2
 - 031VP_00_TP
 - 01 BD
 - 02 SP
 - 03 SA
 - 04 SK
 - 06 S
 - 07 VN
 - 08 ŠVOK
 - 09 D
 - 10 E
 - 11 ER
 - 12 AS
 - 13 GSS
 - 14 PVA
 - 15 ŠT
 - 16 GS
 - 17 CS
 - 18 AA
 - 19 BS
 - 20 SO
 - 21 KS
 - 22 EK
 - 031VP_01_DP
 - 031VP_02_Dalinimuisi
 - 031VP_03_Siunčiami
 - 031VP_04_Gaunami
- Saved Searches
 - BSI200 - Miesto erdvinis tyrimas
 - BSI300 - Medicinos kompleksas

Out to	Name	Description	State	Status	Revision Number	File Revision	Version
	031VP_00_TP	Techninis projektas - ra...	Work in Progre...				
	031VP_01_DP	Darbo projektas	Work in Progre...				
	031VP_02_Dalinimuisi	BIM modeliavimas	Work in Progre...				
	031VP_03_Siunčiami	Publikavimui	Work in Progre...				
	031VP_04_Gaunami	Korespondencijai	Work in Progre...				

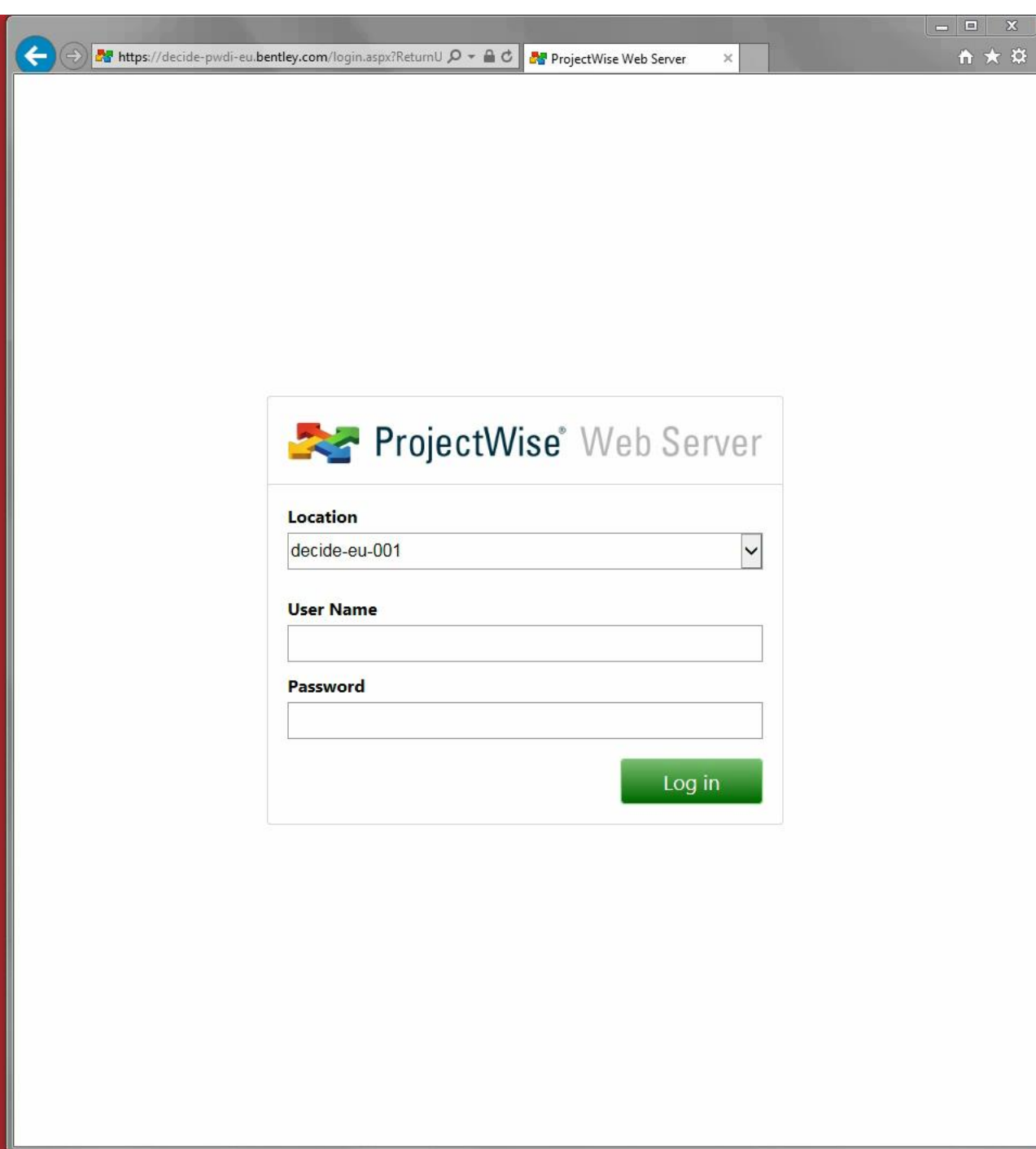
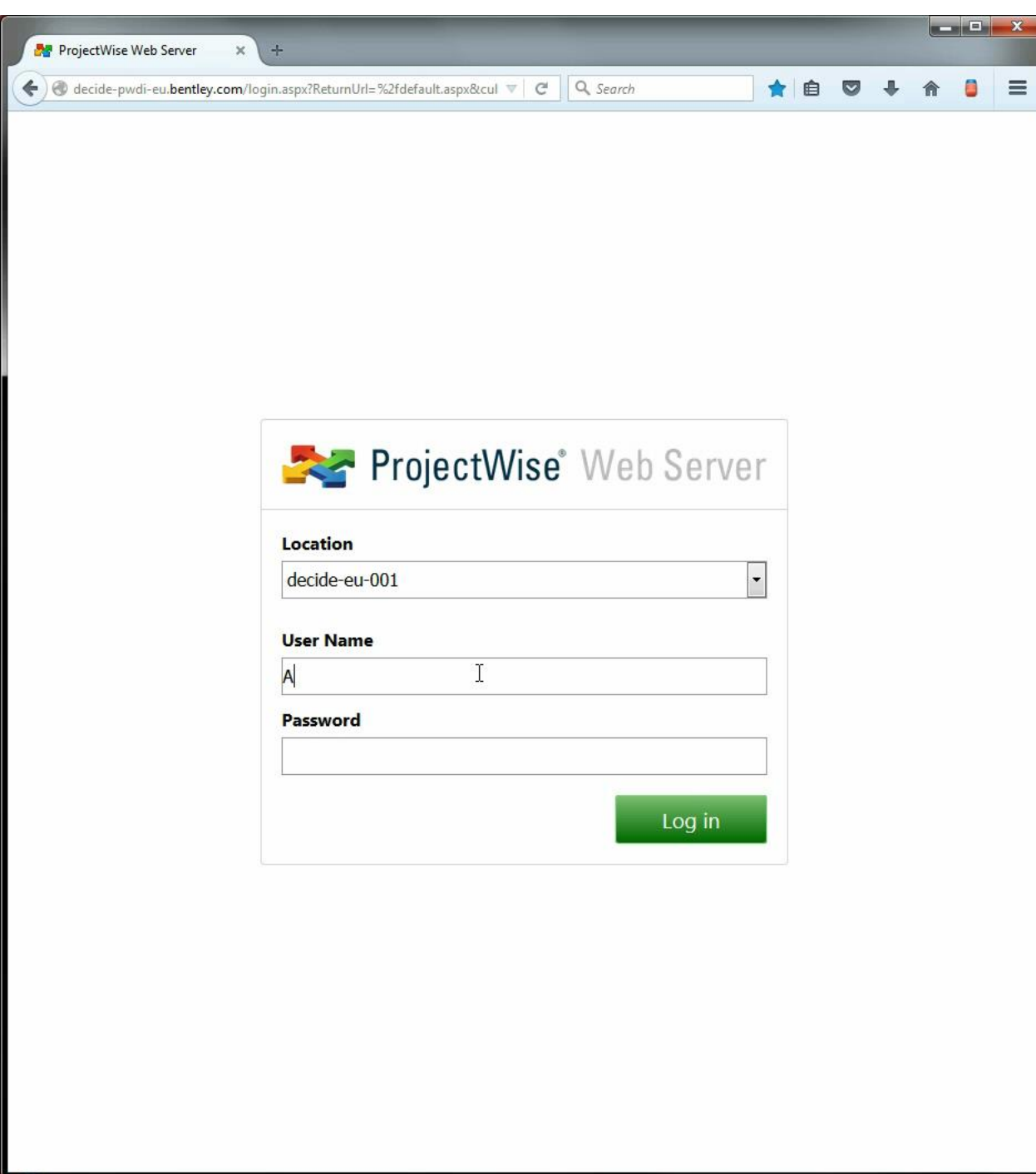
Properties (Project Type - Building)

Project Name	Daugiabučiai Sugiharos g.2
Project Number	031VP-2013
Owner	UAB "Veikmė"
Project Location	Vilnius
Country	Lietuva
Size	0,4310 ha
Project Scope	New Construction

Access to the Information

This presentation uses the data of 9 stores multi-flat house in Sugiharos str. 2, Vilnius, Lithuania by of Company „Veikmė“

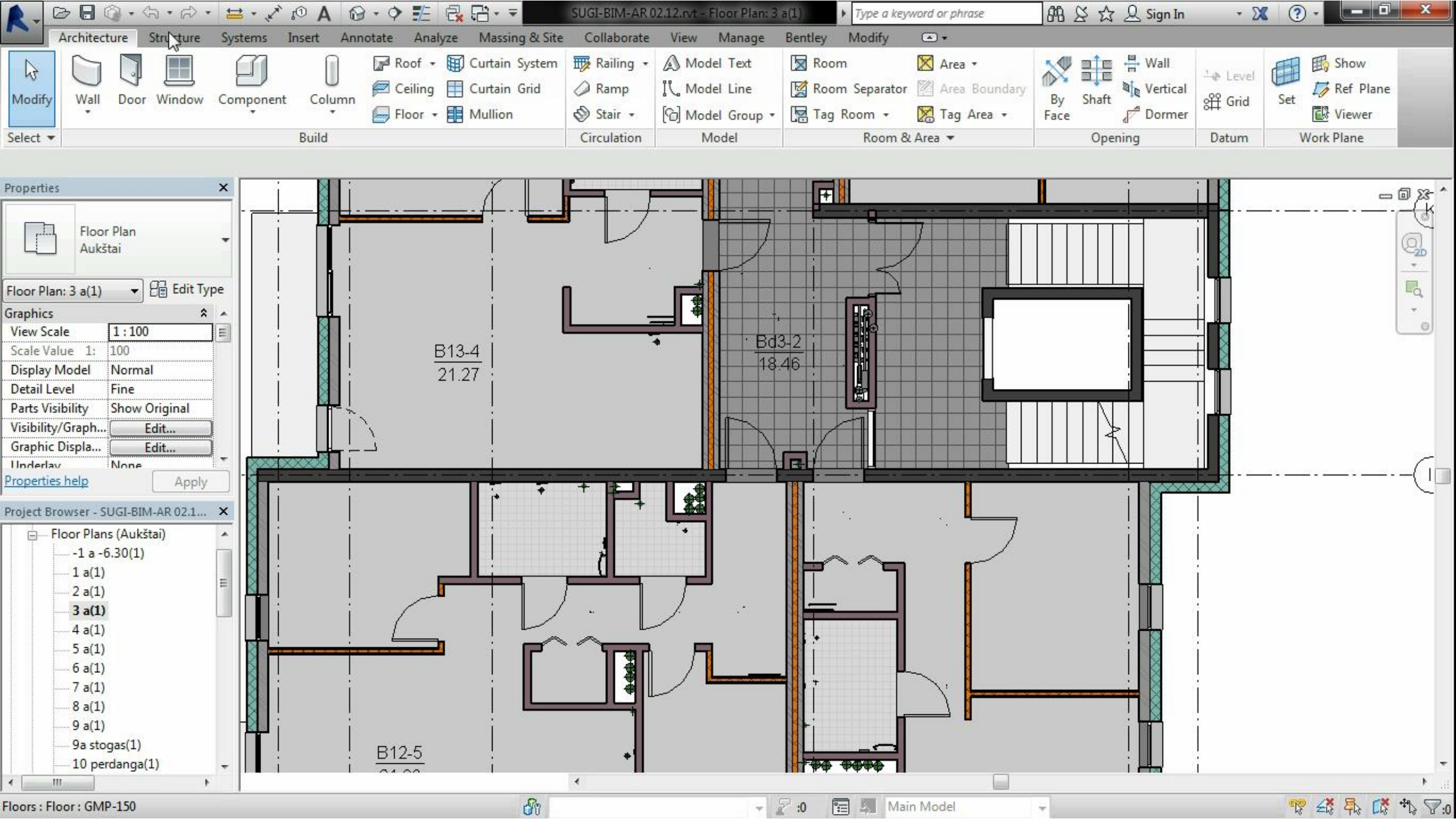




Software Integration

This presentation uses the data of 9 stores multi-flat house in Sugiharos str. 2, Vilnius, Lithuania by of Company „Veikmė“

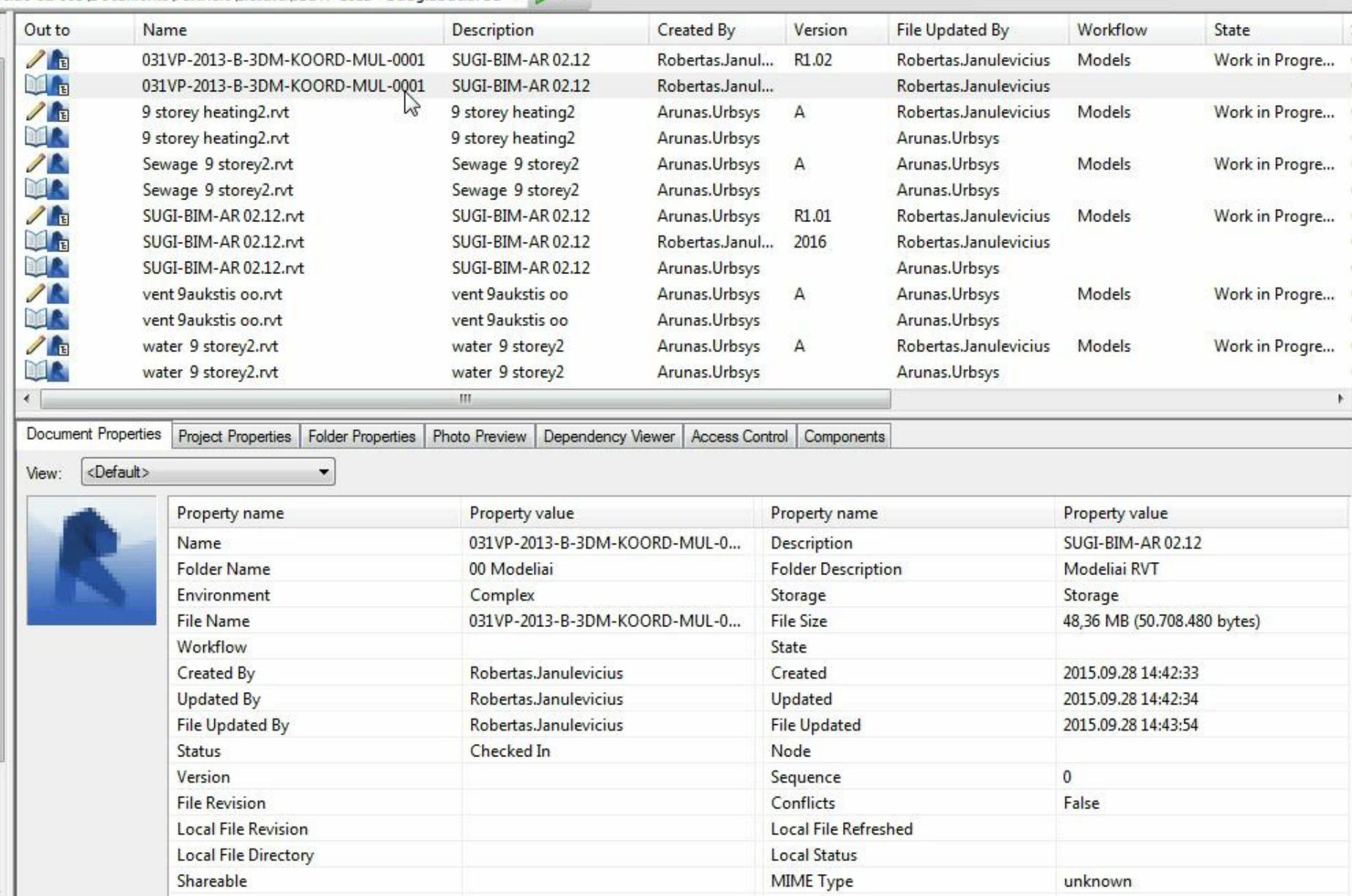




Analysis of the Information: Search, Control, Audit

This presentation uses the data of 9 stores multi-flat house in Sugiharos str. 2, Vilnius, Lithuania by of Company „Veikmė“





Information Mobility for Construction and Inspection

This presentation uses the data
of 9 stores multi-flat house in
Sugiharos str. 2, Vilnius, Lithuania
by of Company „Veikmė“



ProjectWise® Web Server

Ignas.Rimkus [Logout](#)

[Advanced search options](#)

decide-eu-001

- Documents
 - Partners
 - Lietuva
 - 031VP-2013 Daugiabučiai Sugiharos g.2
 - 031VP 03 Siunčiami
 - 031VP 04 Gaunami
 - Saved Searches
 - Template
- Components
- Saved Searches

Folder Document View Tools Help



	Name	Description	File Name	
	031VP 03 Siu...	Publikavimui		
	031VP 04 Ga...	Korespondencijai		

Record

Ramunas iPad

iPad

11:14

55%



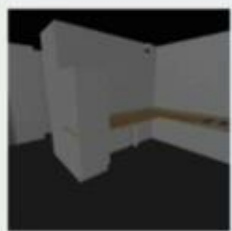
WorkSite



Outlook



Opera Mini



★ Veikme_integruotas-visos_dalys 1

29/09/15
57.03 MB

2 Views
0 Documents

Views Documents

Search



Izometrinis-kairė



Virtuve 8 a



WE CAN DO MORE TOGETHER!

UAB "IN RE"
Lukiškių g. 3, VI aukštas
LT-01108 Vilnius

Tel.: +370-5-212-4660
El.p.: Office@inre.lt
PVM: LT237975219



www.inre.lt » www.spausdinu3D.lt »
www.2dcad.lt » www.3dcad.lt »
www.aec.lt » www.pcscad.lt »